

ADJUSTABLE OUTDOOR BASKETBALL SYSTEM

ASSEMBLY INSTRUCTIONS AND OWNER'S MANUAL



WARNING

FAILURE TO COMPLY WITH ANY OF THE WARNINGS IN THESE INSTRUCTIONS MAY RESULT IN SERIOUS PERSONAL INJURY OR DEATH.

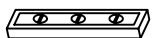
FAILURE TO COMPLY MAY ALSO RESULT IN PROPERTY DAMAGE. PLEASE HEED ALL WARNINGS AND CAUTIONS TO ENSURE YOUR SAFETY.

DO NOT ATTEMPT TO ASSEMBLE THIS SYSTEM WITHOUT CAREFULLY READING AND FOLLOWING ALL INSTRUCTIONS. BEGIN BY IDENTIFYING AND TAKING INVENTORY OF ALL PARTS USING THE PARTS LIST PROVIDED.

REQUIRED TOOLS AND MATERIALS



- 3 PEOPLE



- CARPENTER'S LEVEL



- 15' TAPE MEASURE



- SHOVEL



- 8 FT. STEPLADDERS (2)



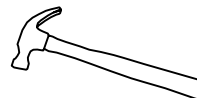
- CONCRETE



- WRENCHES
(SIZES 3/8", 3/4", 15/16" AND 17MM)



- ADJUSTABLE WRENCH (2)



- HAMMER

KEEP THIS INSTRUCTION MANUAL IN CASE YOU HAVE TO CONTACT THE MANUFACTURER FOR REPLACEMENT PARTS.
TOLL FREE CUSTOMER SERVICE - 1-800-527-7510

CUSTOMER ADVISORY AND WARNING

Participation in Physical education, body conditioning, athletics, recreational and related activities involve varying degrees of accidental injury risks, up to and including those with life threatening potential. Under no circumstances should equipment used for these aforementioned activities be altered, tampered with, or used when damaged. Such equipment should **NEVER** be used without direct adult supervision and only after examination for damage, wear, proper function and general stability, nor should it be employed for any activity other than that for which it was specifically intended. Such equipment should **NEVER** be setup, or moved by children. Participants should always know or be made specifically aware of the risks involved in the activity they are participating in as well as their own physical limitations and that of the equipment being used.



**CLIMBING ON GOAL OR
HANGING FROM NET**
can cause serious
injury or death



This equipment should be installed by a qualified contractor. The manufacturer assumes no liability for damage to existing structures which may result from improper installation.

**** A MINIMUM OF THREE ADULTS IS
REQUIRED TO INSTALL THIS UNIT****

STOP!

BEFORE YOU START

STOP!

IDENTIFY AND INVENTORY ALL PARTS USING THE PARTS LIST AS A CHECKLIST. BE SURE TO KEEP THE HARDWARE BAGS AND THEIR CONTENTS SEPARATE. IF ANY PARTS ARE MISSING CALL OUR CUSTOMER SERVICE DEPARTMENT AT 1-800-527-7510.



SAFETY INSTRUCTIONS



FAILURE TO FOLLOW THESE SAFETY INSTRUCTIONS MAY RESULT IN SERIOUS INJURY, DEATH OR PROPERTY DAMAGE AND WILL VOID THE WARRANTY. The owner must ensure that all players know and follow these rules to safely operate the system. Proper and complete assembly, use and supervision is essential for proper operation and to reduce the risk of accident or injury. A high probability of serious injury exists if this system is not installed, maintained, or operated properly.

- If using a ladder during assembly, use extreme caution. Follow all warnings and cautions on the ladder carefully. 3 people are required to lift the unit into place. Before digging, contact the appropriate agency to locate underground power cables, gas and water lines. Do not install the system within 20 feet of overhead power lines. Climate, corrosion, or misuse could result in system failure. If technical assistance is required, contact the manufacturer. Minimum operational height is 7'6" to the Rim. Most injuries are caused by misuse and/or failure to follow instructions. Use caution when using the system.

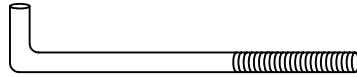
PARTS LIST

ITEM	DESCRIPTION	QTY
A	POLE	1 EA
B	UPPER SUPPORT ARMS	2 EA
C	LOWER SUPPORT ARMS	1 EA
D	JACK BRACKETS	2 EA
E	MOUNTING PLATE	1 EA
F	CRANK JACK	1 EA
G	BACKBOARD	1 EA
H	RIM	1 EA
I	RIM COVER	1 EA
J	10" ROD	1 EA
K	LOCK PIN	1 EA
L	5/8" x 16" J-BOLT	4 EA
M	5/8" HEX NUT	14 EA
N	5/8" FLAT WASHER	10 EA
O	5/8" LOCK WASHER	2 EA
R	5/8" x 7.5 " HEX BOLT	2 EA
S	5/8" x 5" HEX BOLT	1 EA
T	7/16" x 3.25" HEX BOLT	2 EA
U	SCREW	2 EA
V	18mm x 12" HEX BOLT	2 EA
W	10mm x 75mm HEX BOLT	4 EA
X	18mm x 9.5" HEX BOLT	1 EA
Y	18mm FLAT WASHER	6 EA
Z	18mm LOCKING NUTS	3 EA
AA	7/16" FLAT WASHER	8 EA
BB	7/16" NYLON WASHER	4 EA
CC	5/8" LOCKNUT	1 EA
DD	7/16" HEX NUT	4 EA
EE	10mm FLAT WASHER	8 EA
FF	10mm HEX NUT	4 EA
GG	POLE PAD	1 EA
HH	7/16" x 2.5" HEX BOLT	2 EA
II	36" REBAR	4 EA
JJ	BASE PLATE PAD	1 EA
KK	10mm LOCK WASHER	4 EA

REQUIRED FOR THIS PAGE:



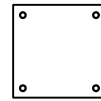
15/16" WRENCH



Ⓛ 4 PCS



Ⓜ 8 PCS



ⓔ 1 PCS



SHOVEL

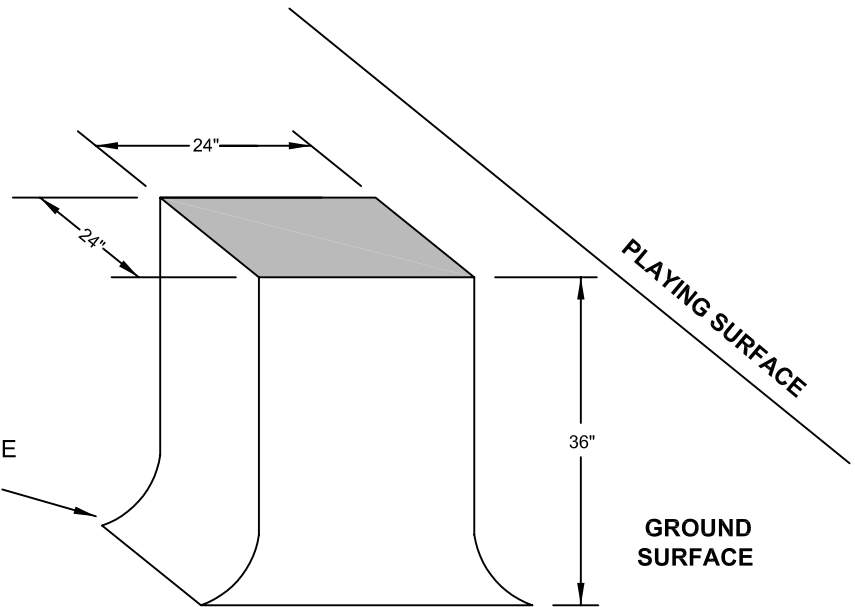
— ONLY ONE ADULT IS REQUIRED FOR THE FOLLOWING STEPS —

STEP 1

Ensure ground is level with playing surface, then dig hole for concrete footing.

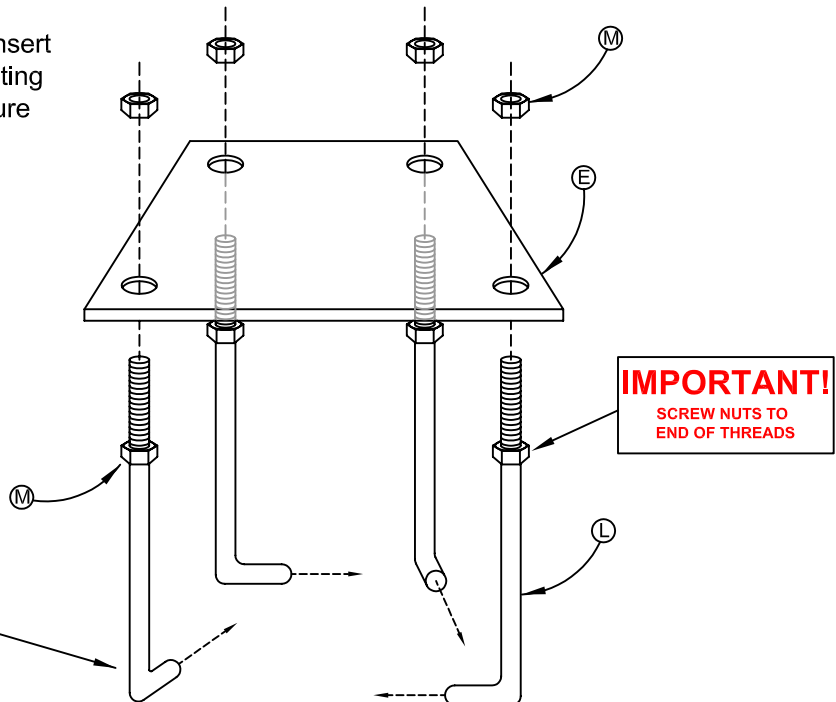


BELL OUT THE
BOTTOM OF
THE HOLE.



STEP 2

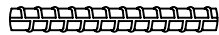
Install nut (M) to J-bolt (L) as shown and then insert threaded ends of J-bolts through holes in mounting plate (E) and secure as shown. Repeat procedure for the other three J-bolts.



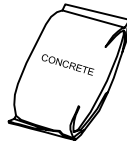
REQUIRED FOR THIS PAGE:



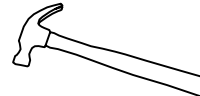
SHOVEL



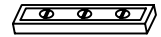
① REBAR (4 PCS)



CONCRETE



HAMMER



CARPENTER'S LEVEL

— ONLY ONE ADULT IS REQUIRED FOR THE FOLLOWING STEPS —

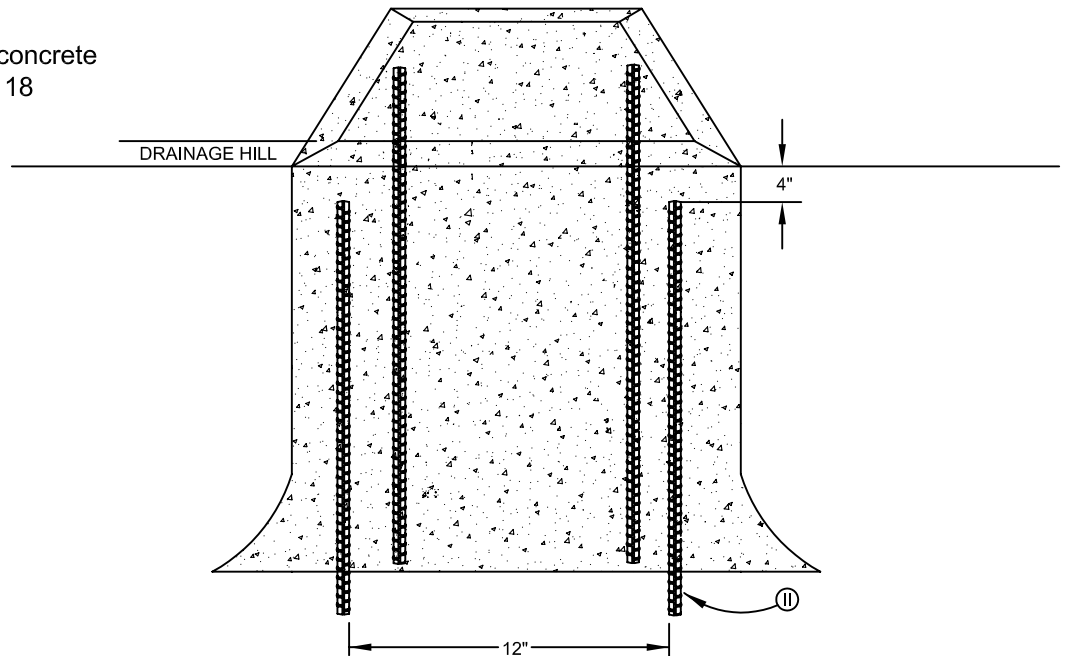
STEP 3

Mix the concrete according to the instructions on the bag. Pour the concrete into the hole, up to approximately 18 inches from the top edge.

STEP 4

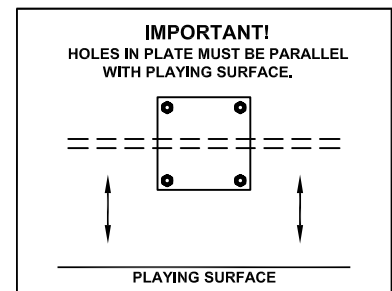
Insert the four pieces of 36" rebar into the hole, hammer each piece 4" below ground surface. The four pieces should be arranged in a square approximately 12 inches wide. Finish filling the hole to the top with concrete. Tamp down concrete to release air pockets and build up drainage hill.

PROCEED IMMEDIATELY TO STEP 5.



STEP 5

Insert J-bolts (L) from mounting plate (E) into cement as shown. Move assembly around to release any air pockets in cement, then rest mounting plate on cement drainage hill. Apply some pressure to level mounting plate on top of drainage hill. Level mounting plate and square with playing surface. Clean off any excess cement on mounting plate at this time.

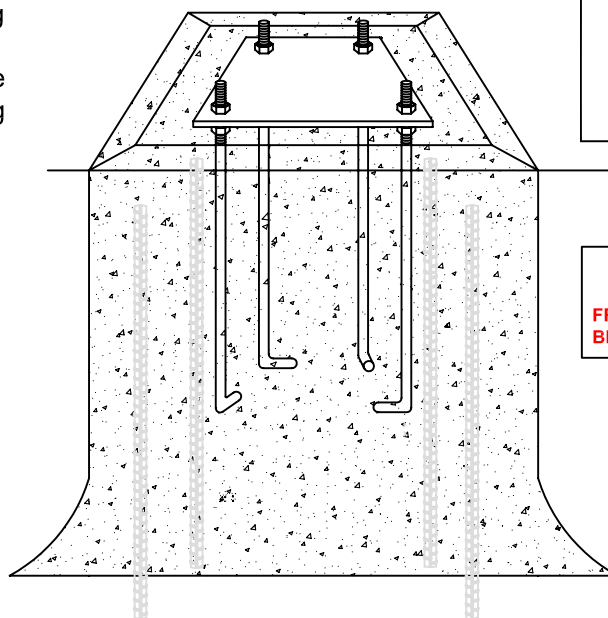


IMPORTANT!
FRONT OF MOUNTING PLATE (E) MUST BE PARALLEL WITH PLAYING SURFACE.



WARNING

DO NOT PROCEED TO STEP 6
UNTIL CONCRETE HAS CURED
FOR A MINIMUM OF 72 HOURS.
ALLOW ADDITIONAL TIME FOR
COLD, WET OR HUMID WEATHER.



REQUIRED FOR THIS PAGE:



15/16" WRENCH



(R) 2 PCS



(N) 8 PCS



(M) 6 PCS



(O) 2 PCS

⚠ WARNING ⚠

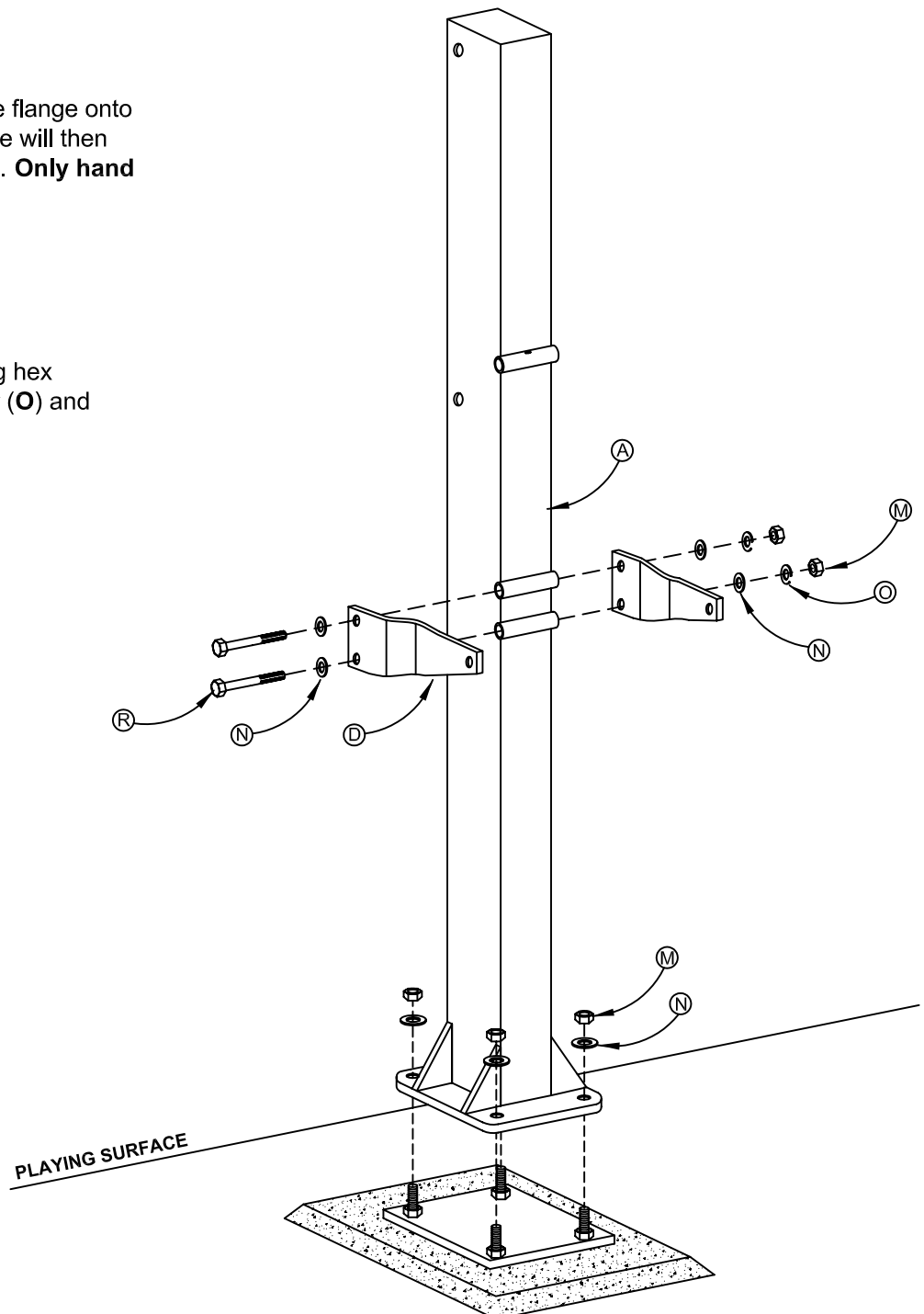
— A MINIMUM OF THREE ADULTS IS REQUIRED FOR THE FOLLOWING STEPS —

STEP 6

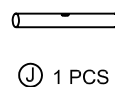
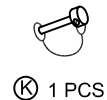
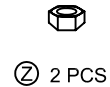
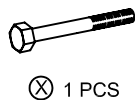
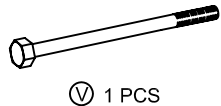
Upright pole (A). Assemble lower pole flange onto protruding J-bolts as shown. The flange will then rest on the nuts as shown from step 2. **Only hand tighten at this time.**

STEP 7

Secure jack brackets (D) to pole using hex bolts (R), flat washer (N), lock washer (O) and hex nuts (M) as shown.



REQUIRED FOR THIS PAGE:



— A MINIMUM OF THREE ADULTS IS REQUIRED FOR THE FOLLOWING STEPS —

STEP 8

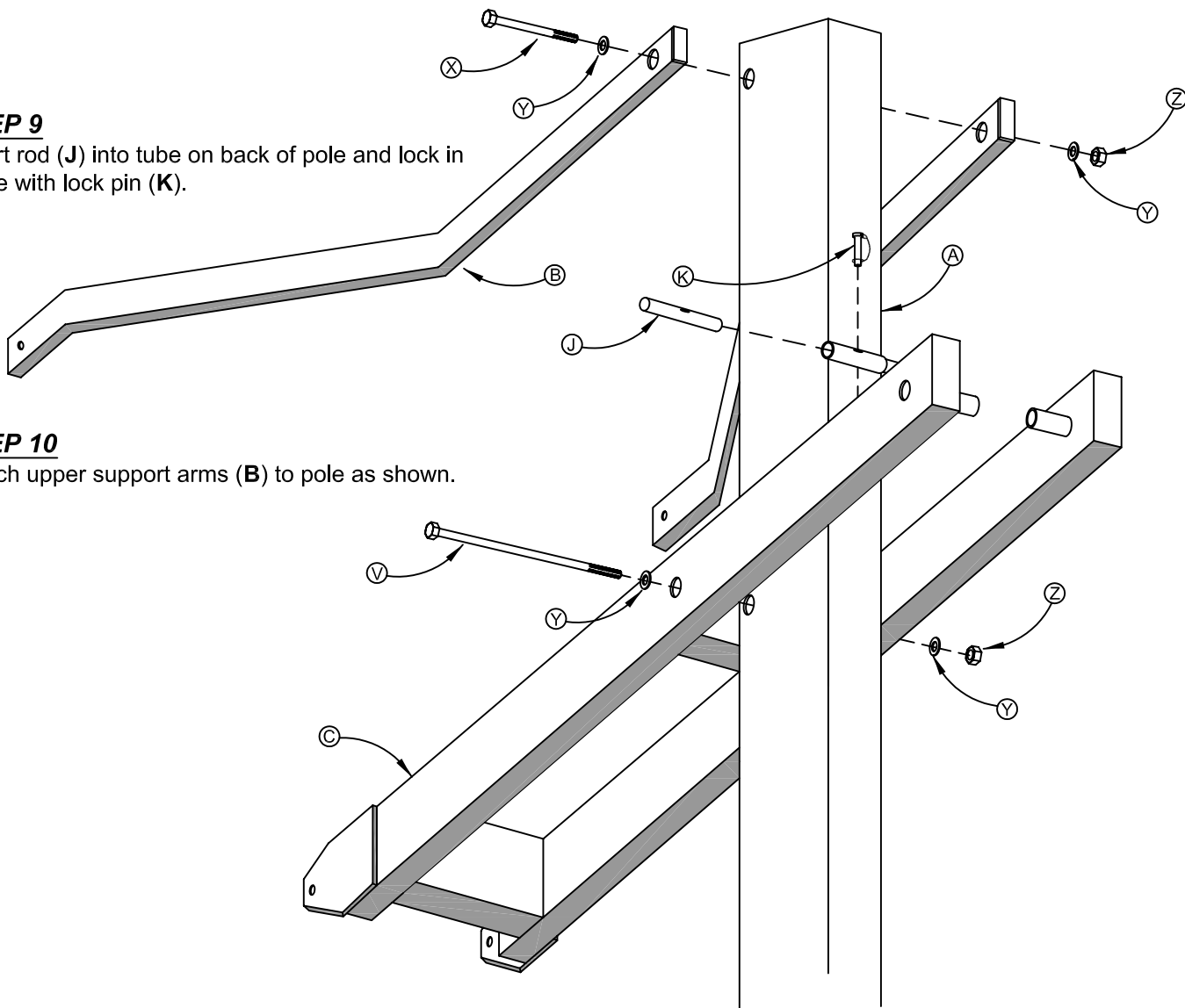
Attach lower support arms (C) to pole as shown.

STEP 9

Insert rod (J) into tube on back of pole and lock in place with lock pin (K).

STEP 10

Attach upper support arms (B) to pole as shown.



REQUIRED FOR THIS PAGE:



15/16" WRENCH



3/4" WRENCH



ADJUSTABLE
WRENCH (2 PCS)



Y 2 PCS



BB 4 PCS



N 2 PCS



AA 8 PCS



CC 1 PCS



DD 4 PCS



Z 1 PCS



V 1 PCS



S 1 PCS



T 2 PCS



HH 2 PCS

⚠ WARNING ⚠

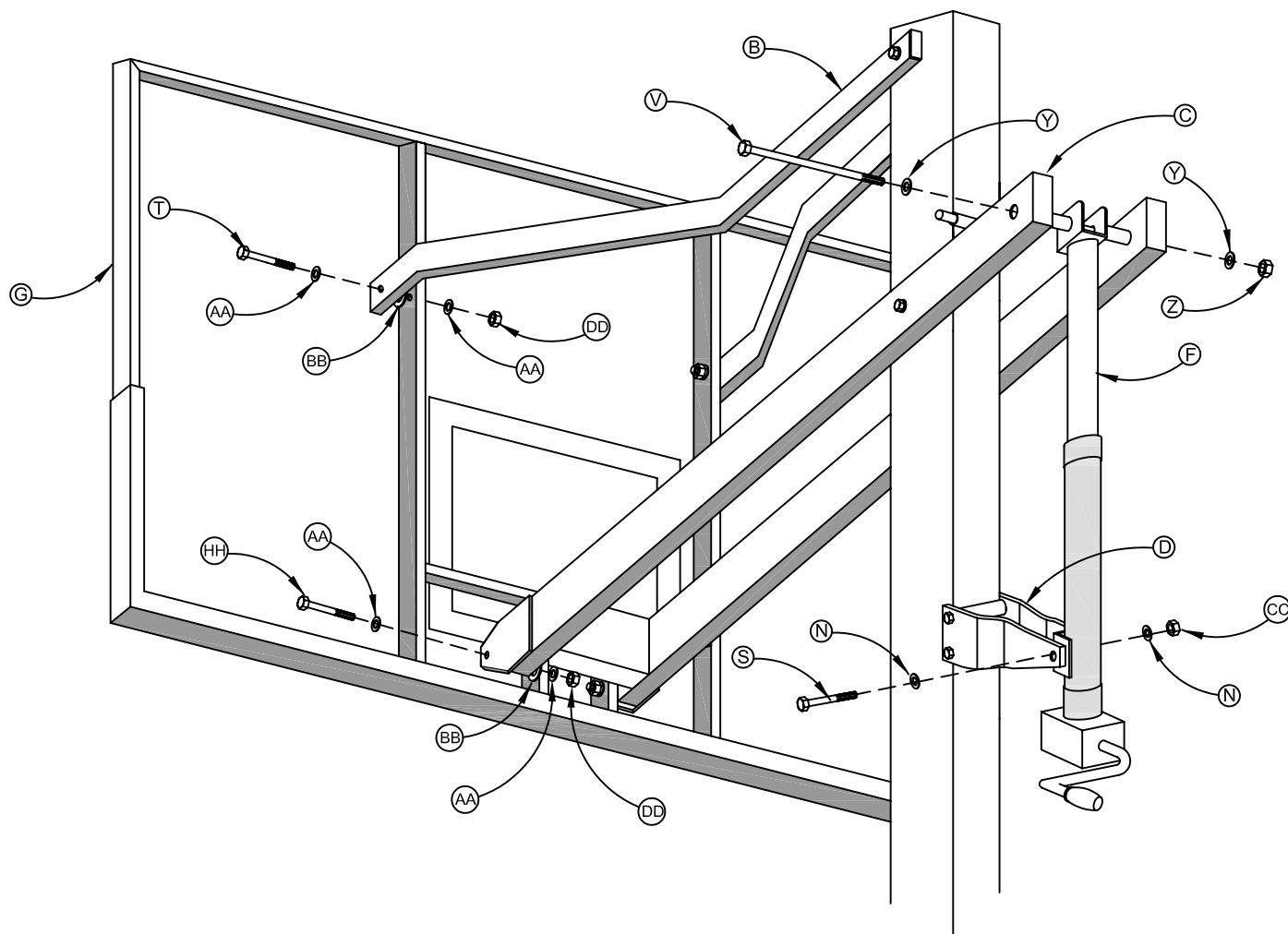
A MINIMUM OF THREE ADULTS IS REQUIRED FOR THE FOLLOWING STEPS

STEP 11

Attach upper and lower arms
(B & C) to backboard (G).

STEP 12

Install crank jack (F) U-joint to
lower support arm (C) and jack
brackets (D) as shown.



REQUIRED FOR THIS PAGE:



17mm WRENCH



3/8" WRENCH



ADJUSTABLE
WRENCH



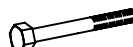
KK 4 PCS



EE 8 PCS



FF 4 PCS

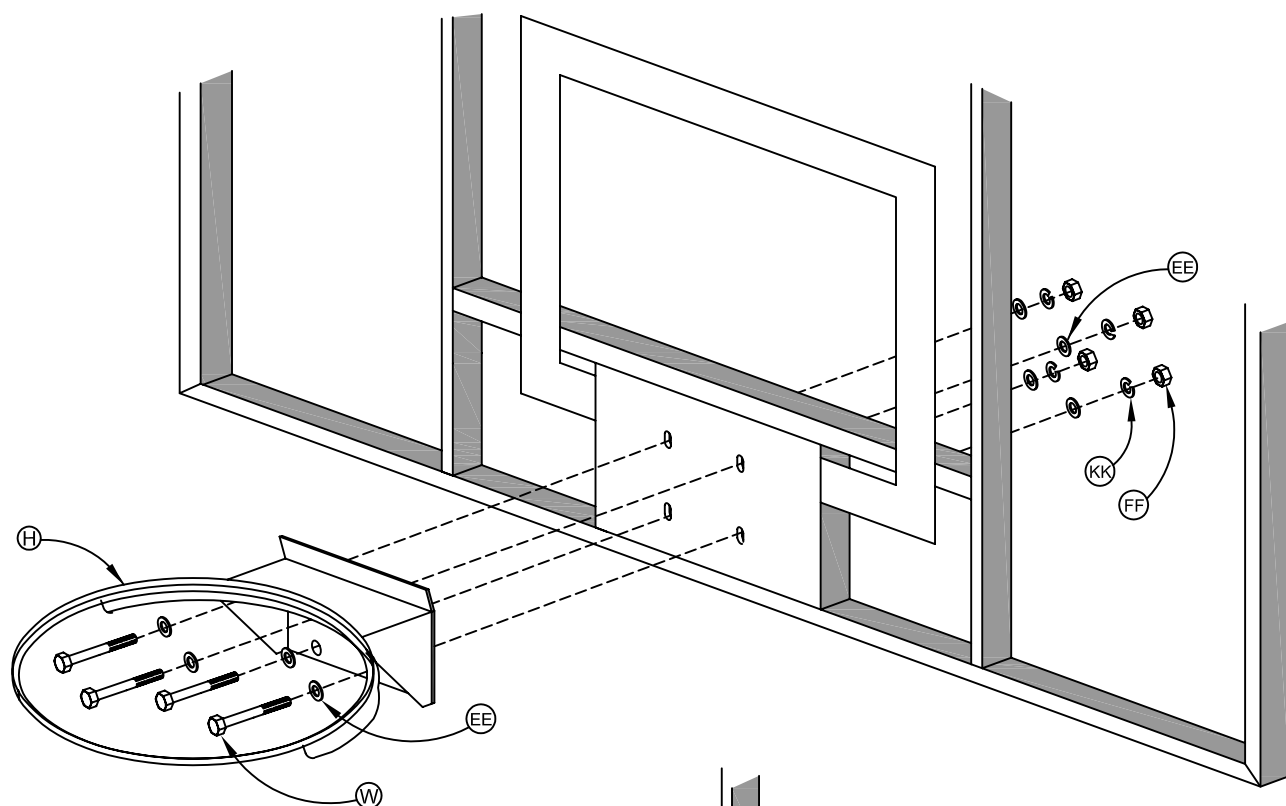


W 4 PCS



U 2 PCS

A MINIMUM OF TWO ADULTS IS REQUIRED FOR THE FOLLOWING STEPS

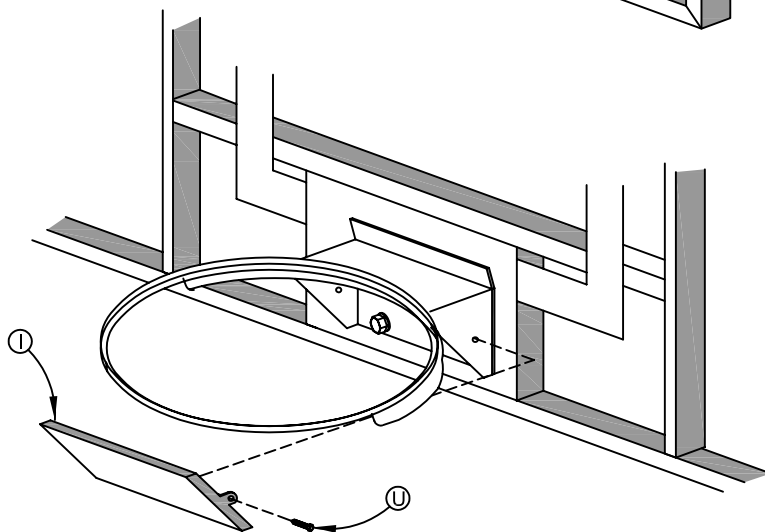


STEP 13

Attach rim (H) as shown.

STEP 14

Attach rim cover (I) as shown.



REQUIRED FOR THIS PAGE:

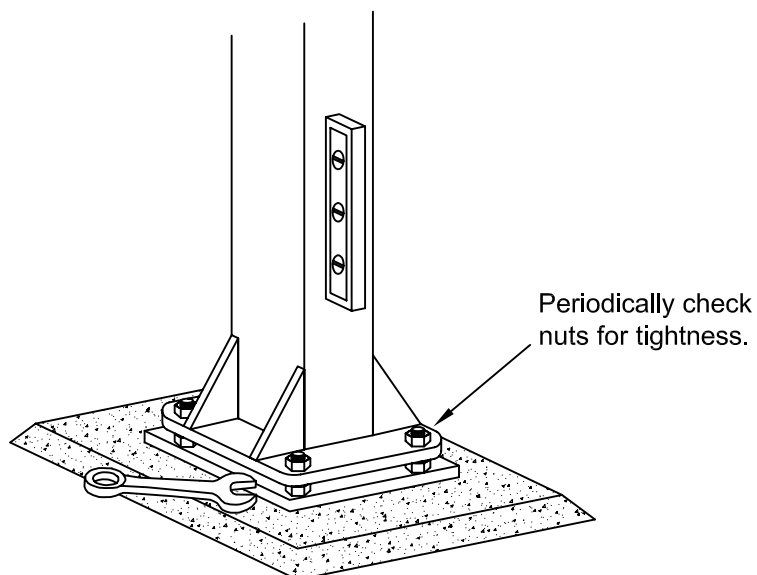


———— **ONLY ONE ADULT IS REQUIRED FOR THE FOLLOWING STEPS** ————

STEP 15

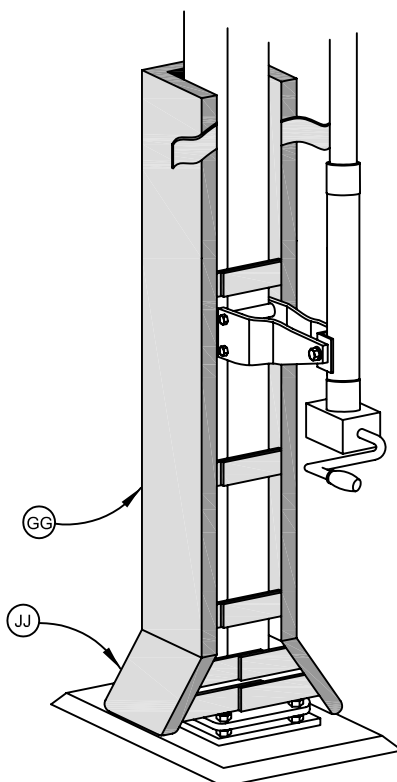
Check leveling at this time. Pole should be level in all directions. After system is leveled, completely tighten nuts above pole flange.

NOTE: IF ADJUSTMENT IS NECESSARY, ADJUST SYSTEM BY ROTATING THE NUTS BETWEEN MOUNTING PLATE AND POLE FLANGE.



STEP 16

Secure pole pad (**GG**) and base plate pad (**JJ**) using hook and loop straps.



STEP 17

Rotate crank handle to raise and lower backboard. Crank handle can be locked with pad lock at desired height.